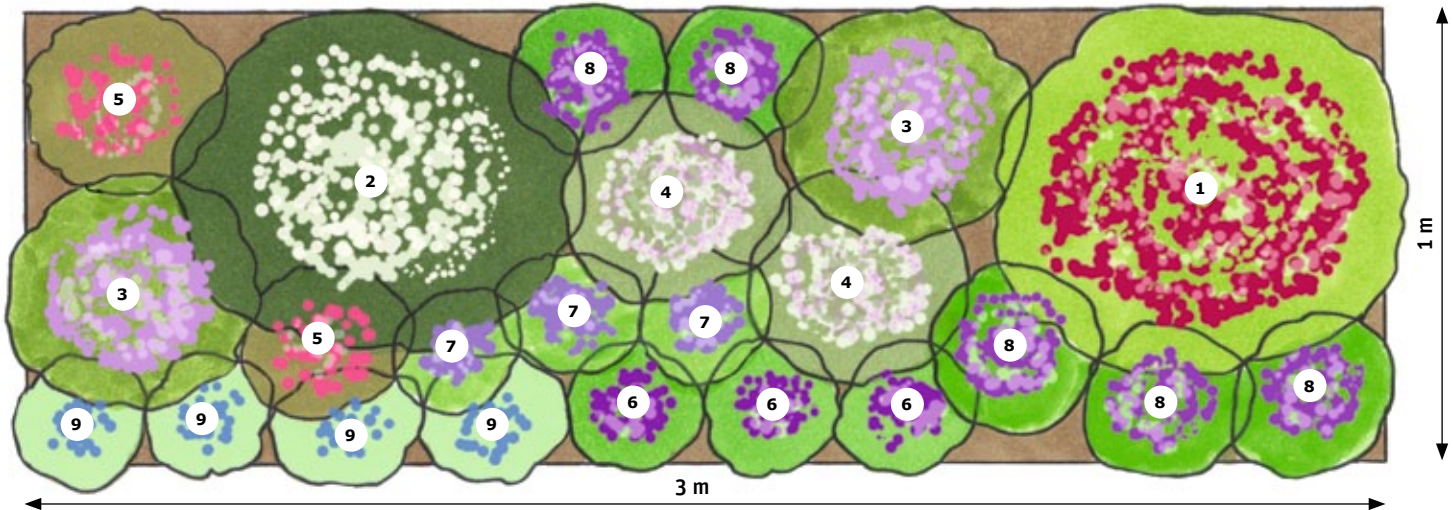


Das „Gartenfreund“-Staudenbeet



	Nr.	Sorte	Höhe	Blütezeit	Menge
	1	Kerzen-Knöterich, <i>Bistorta amplexicaulis</i> , 'Taurus'	90-100	7-10	1
	2	Silberkerze, <i>Cimicifuga simplex</i> , 'White Pearl'	120-140	9-10	1
	3	Dolden-Glockenblume, <i>Campanula lactiflora</i> , 'Superba'	80-100	6-8	2
	4	Sterndolde, <i>Astrantia major</i>	50-60	6-9	2
	5	Bergenie, <i>Bergenia cordifolia</i> 'Eroica'	30-40	4-5	2
	6	Frühlings-Platterbse, <i>Lathyrus vernus</i>	30	4-5	3
	7	Lilientraube, <i>Liriope muscari</i> 'Big Blue'	30-40	8-10	3
	8	Sibirischer Storchschnabel, <i>Geranium wlassovianum</i>	30-40	7-9	5
	9	Lungenkraut, <i>Pulmonaria saccharata</i> , 'Lewis Palmer'	30-35	4-5	4

Fotos: Ruud Morijn/Adobe Stock; Flora Press/Jonathan Buckley; ezehie/Adobe Stock; mauritius images/Garden World Images/Joshua McCullough; ottochka/Adobe Stock; Flora Press/Nathalie Pasquet; Flora Press/Alamy; Tony Baggett/Alamy; Flora Press/Simon Colmer; Grafik: Christine Faltermayr